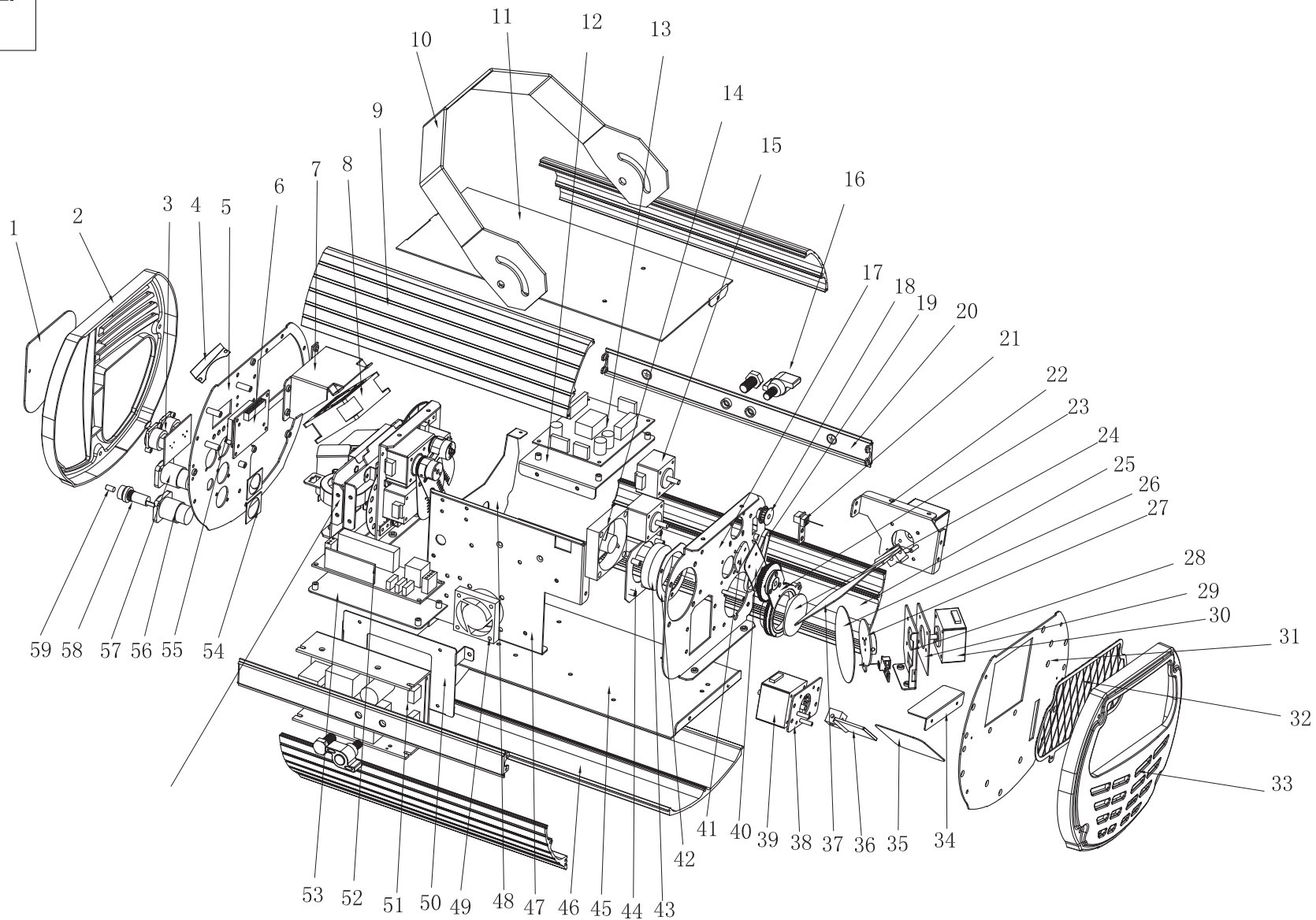


SERVICE MANUAL

Sniper 2R

- ◆ Exploded View
- ◆ Part List
- ◆ Circuit Diagrams
- ◆ Wiring Diagrams



A
B
C
D
E
F
G
H
I

1 2 3 4 5 6 7 8 9 10 11 12 13 14

							Exploded Diagram		Edition
							Parts NO.		Total Page:
			Item Name	ELATION SNIPER 2R			Drawing NO.		Seq:
						20150304			Version



Parts List

Model	SNIPER 2R
Date	2015-3-4
Ver	B

Seq.	Part#	Description
1	4031160040	Back plate of lamp
2	3005002157	Plastics back cover (ABS)
3	2010203825	5pin DMX signal Board (8921DMX)
4	4031160350	Air deflector
5	4031160130	Back board
6	2010143506	Display PCB
7	4031160100	Fixed plate of fan
8	3014001167	DC ball fan (ME80152V3-000C-G99 ,8015,DC24V)
9	4031160370	Aluminium 3
10	4031160080	Hanger
11	4031160090	Top cover plate
12	4031160220	Fixed plate of main PCB
13	2010204088	Main PCB
14	3014001144	DC ball fan (DC24V,2.4W,6015,60*60*15mm)
15	3010000018	Stepping Motor (: 1.8°,35.3*35.3*26mm)
16	3026013022	S handle (M8*16,ABS)
17	4031160140	Fixed plate of prism
18	3002000272	Belt wheel 2
19	3022000151	Belt for prism
20	4031160250	Side board
21	2010088701	Sensor board D2
22	4031160030	Fixed plate of mirror
23	3002000861	Prism holder
24	3015000216	Glass (φ46.8, triple prism)
25	4031160380	Aluminium 4
26	3016000139	Reflector 3 (82, aluminizing)
27	3005002374	Rotating wheel of mirror
28	4031160280	Flitch of rotating mirror
29	3005000154	Sheet rubber



Parts List

Model	SNIPER 2R
Date	2015-3-4
Ver	B

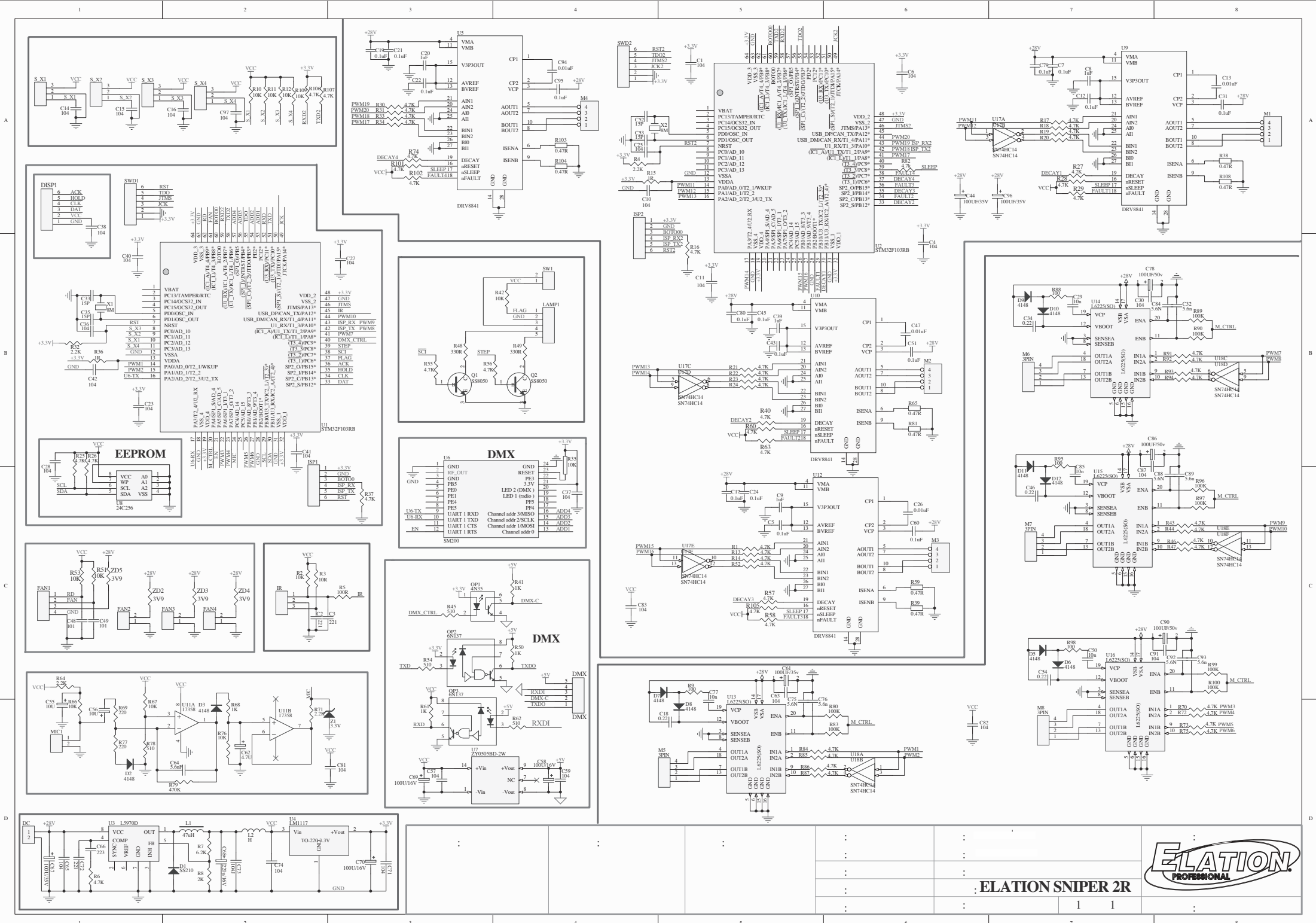
Seq.	Part#	Description
30	3010000016	Stepping Motor (17HD 5009-01,1.8°)
31	4031160160	Front Plate
32	4031160300	Lens Net
33	3005002156	Plastics Front Cover
34	4031160320	Barn Doors 2
35	3016000137	Reflector 1 (80*60, aluminizing)
36	3002001696	Mirror Holder
37	3016000138	Reflector 2 (80*80, aluminizing)
38	4031160230	Fixed Plate of Motor
39	3010002003	Stepping Motor (17HD0051-05)
40	4031160390	Counterweight Plate of The Prism
41	4031160400	Clump Weight
42	4031160190	Squash of Lens
43	3015000190	Cemented Lens (Φ50, biconvex +715°, +214°)
44	4031160180	Fixed Plate of Lens
45	4031160070	Base Board
46	4031160360	Aluminium 2
47	4031160110	Partition
48	4031160310	Barn Doors
49	3014001154	DC Ball Fan (AD0524HB-G70 : DC24V,0.11A, 5010)
50	4031160270	Fixed Plate of Power Supply
51	2210006900	Power Supply (VUP300F380B038 : IN:100- 240VAC, 50/60Hz OUT1:380V 200W OUT2:28V 100W)
52	3007015056	Electronic Ballast (PHILIPS,INPUT:DC280-400V88HZ,O UTPUT:60-100V1.32-2.2A,132W,EUC
53	4031160170	Driver Fixed Plate
54	4041690080	Fixed Plate of Powercon
55	3005000885	Glass of Display Screen (37.5**22.5*2MM)



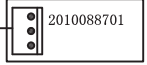
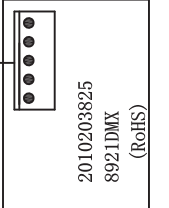
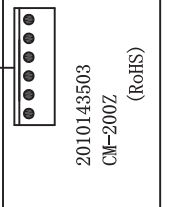
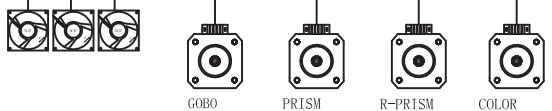
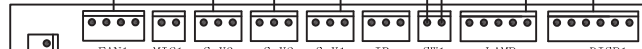
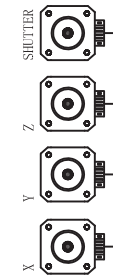
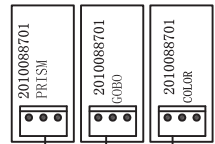
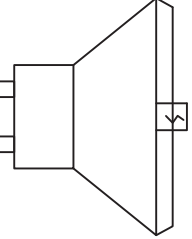
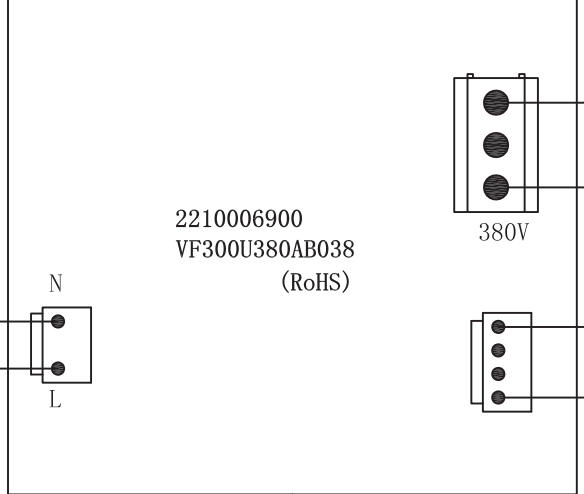
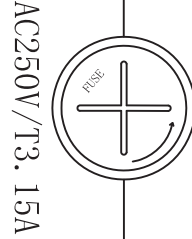
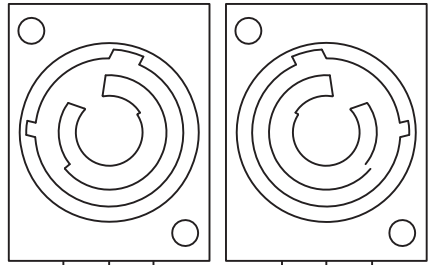
Parts List

Model	SNIPER 2R
Date	2015-3-4
Ver	B

Seq.	Part#	Description
56	3003000260	Powercon Socket (NEUTRIK : White, 3PIN,UL:E135070)
57	3003000261	Powercon Socket (Neutrik AG, NAC3MPA-1, 20A,250V,85°)
58	3020000026	Fuse Base (HONGJU,5*20,10A,250V,)
59	3019000039	Delay Fuse (T6.3A/L250V Delay,Φ5*20)



ELATION SNIPER 2R



2010204088 (RoHS)

ELATION SNIPER 2R

:	:	:
:	:	:
:	:	:
:	:	:
:	:	: